

Syclone Canister Replacement Procedure

The waste stream treated by the Syclone is discharge from a dental vacuum system and as such may contain concentrations of solid and soluble mercury and silver. Because of this any spills should be considered hazardous and should be handled in accordance with standard hazardous materials handling procedures. Full canisters should be handled, stored and disposed of according to regulations applying to hazardous waste containing mercury. Always wear protective gear when handling full Syclone canisters (latex gloves, safety glasses or face shield) and dispose of per local regulations and codes.

⚠ IMPORTANT!

KEEP VACUUM SYSTEM RUNNING DURING THE ENTIRE CANISTER REPLACEMENT PROCEDURE

- If using a variable speed vacuum, refer to the vacuum manufacturer's user guide. Insure at least one suction valve is open and vacuum is engaged before changing the collection container.
- This procedure should be performed only when no operatories are being used as loss of chairside vacuum may occur.
- Sanitize the vacuum system using the sanitization procedure established at your facility. It is good practice to leave the vacuum pump running for 5 to 10 minutes every time the system is sanitized in order to allow excess liquid time to evacuate the lines.

Syclone Amalgam Separator



Contents of Recycle Kit

- One (1) instruction sheet
- Two (2) clear snap caps
- Two (2) foam packaging end caps
- One (1) "slider lock" style disposal bag
- One (1) 12" length of packaging tape
- Two (2) 6" length of packaging tape

SAVE INNER CARTON AND FOAM END CAPS FOR RETURN SHIPMENT OF YOUR FULL SYCLONE CANISTER!

How to Package the Cyclone Canister for Recycling

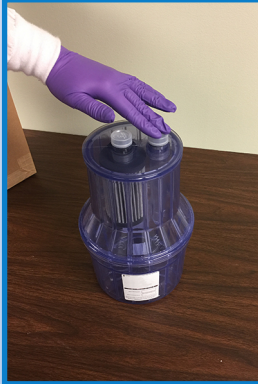


1

• PLACE THE **CLEAR SNAP CAPS** PROVIDED OVER THE INLET AND OUTLET FITTINGS OF THE FULL SYCLONE CANISTER.

• Press down firmly on the clear caps until they snap into place over the black O-rings.

• Inspect black O-rings to confirm they have remained in place. If O-rings have moved, remove clear snap cap and reinstall.



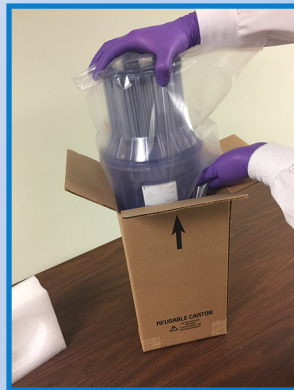
2

Place the **CAPPED** Syclone canister into the plastic bag and seal.



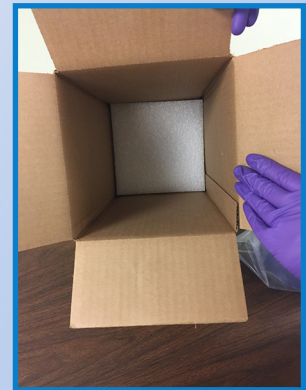
3

Remove the bottom foam End Cap, and place it in the box with the flat/uncut side **UP**, creating a firm base.



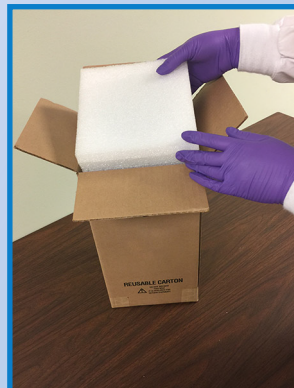
4

Place **CAPPED AND BAGGED** Syclone canister onto the foam base.



5

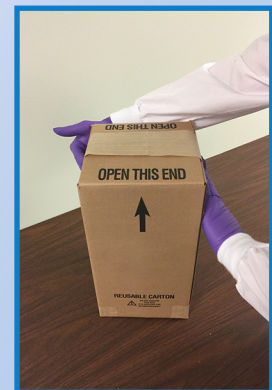
Take the remaining foam end cap and place the circular cut portion over the top of the **CAPPED AND BAGGED** Syclone canister and push firmly into place; it should fit snugly over the top of the container. Close the box.



6

• Using a wet sponge, thoroughly moisten the 12" piece of shipping tape and apply it to the box end seams ensuring a tight seal.

• Using a wet sponge, thoroughly moisten the 6" piece of shipping tape and apply it to the box end seams ensuring a tight seal.



7

Box is ready for UPS shipping, if necessary call 800-742-5877 to schedule a pickup.