



Solmetex[™]

Hg5[®] Mini Amalgam Separator
Installation and Operations Manual



Thoroughly read and understand instructions prior to installing, operating and servicing the Hg5[®] Mini Amalgam Separator. These instructions are also available on our website at www.solmetex.com.



WARNING

The waste stream treated by the Hg5[®] is discharge from a dental vacuum system and as such may contain concentrations of solid and soluble mercury and silver.

- Always wear protective gear when handling full Hg5[®] collection containers (latex gloves, safety glasses or face shield) and dispose of per local regulations and codes.
- Full collection containers should be handled, stored and disposed of according to regulations applying to hazardous waste containing mercury.
- Any spills should be considered hazardous and should be handled in accordance with standard hazardous materials handling procedures.

Solmetex Warranty

Solmetex Hg5[®] Mini Air Water Separators are warranted against defects in material and workmanship for a period of two (2) years from the date of purchase, established by proof of purchase or formal warranty registration. During the warranty period, Solmetex will at its option repair or replace products that prove to be defective.

Solmetex Hg5[®] Collection Containers are warranted against defects in material and workmanship for a period of one (1) year from the date of purchase, established by proof of purchase or formal warranty registration. During the warranty period, Solmetex will at its option repair or replace products that prove to be defective.

Labor, transportation and service charges are not included.

Limitations of Warranty

The warranty shall not apply to defects resulting from improper installation, maintenance, abuse, unauthorized modification, or operation outside of the environmental specifications for the product or damages that occur due to improper repackaging of equipment for return to Solmetex.

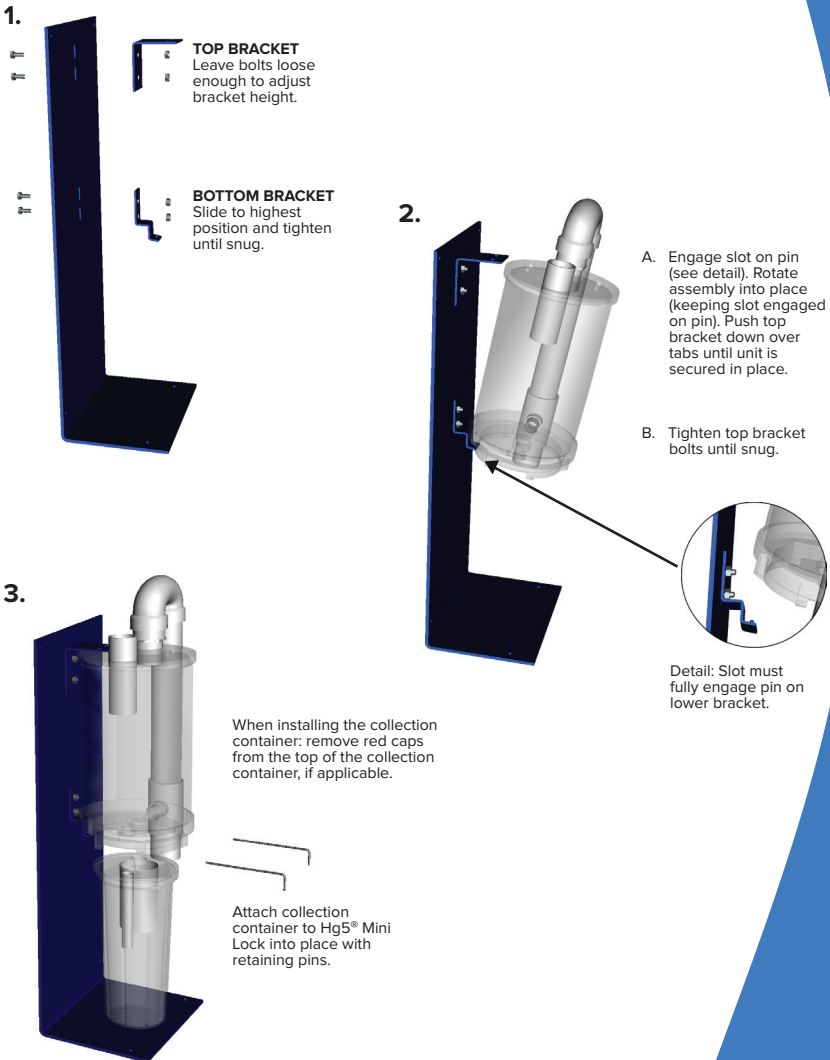
Use of third party collection containers or line cleaners having a pH less than 6 or greater than 10 will void these warranties.

For a complete list of recommended cleaners, visit our website at www.solmetex.com.

No other warranty is expressed or implied. Solmetex specifically disclaims the implied warranties of merchantability and fitness for particular purpose.

Hg5[®] Mini Amalgam Separator Initial Set-Up

The Hg5[®] Mini Amalgam Separator is a Type 2 device with a maximum flow of 1000 ml/min and maximum fillable volume of 950 ml.



Hg5[®] Mini Installation tips

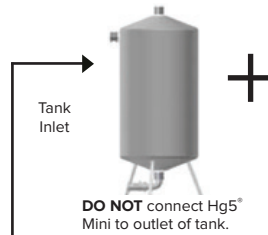
Installation tips:

- Place in an easily accessed location for replacement of collection container.
- Place between treatment rooms and vacuum source. **DO NOT** connect to outlet of separating tank or water ring pump.
- The Hg5[®] Mini should be installed so that the outlet is higher than the tank or pump inlet.
- Use provided inlet and outlet couplings. **DO NOT** glue plumbing to the Hg5[®] Mini inlet and outlet.
- Securely mount or support the baseplate.
- If mounting to a wall, use the four (4) plastic standoffs (included), one on the back of each hole in the baseplate.
- If attaching to the floor, the four (4) plastic standoffs will not be required to be used.
- Write the installation date on the collection container.
- Complete the registration form and return to Solmetex.

Environmental Specifications:

- Overall Dimensions: 11" W x 21.5" H x 8" D
- One Hg5[®] will serve up to 4 chairs.
- Minimize water lift height.
- Maximum Temperature = 120° F (52° C)
- Maximum Vacuum = 15" Hg (51 kPa)
- For dental use **ONLY**.

Treatment Rooms



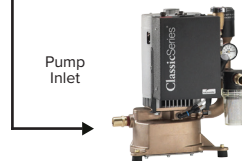
DO NOT connect Hg5[®] Mini to outlet of tank.



Dry Vacuum Unit

OR

Functional with 15, 30, or 50 Gallon Tank And with Single or Dual Wet Ring Pumps



DO NOT connect Hg5[®] Mini to outlet of the water ring pump.

Collection Container

Your collection container must be changed once every twelve (12) months or when the sediment level reaches the full line, whichever occurs first.

Check the sediment level of the collection container weekly.

Maintenance

Line rinsing & vacuum line cleaners - cleaners should be: Non-foaming, de-odorizing, sanitizing & pH between 6 and 10.

Using line cleaners outside of this pH range will void the warranty.

For a complete list of recommended cleaners, visit our website at www.solmetex.com.

With Dental Vacuum Systems: Follow manufacturers instructions.

Plan to rinse no more than 5 chairs every 10 minutes. Limit the total maximum flow to the Hg5[®] Mini during rinsing to 1 liter per minute. Rinsing too much or too rapidly can overflow the Hg5[®] Mini and could affect the unit's efficiency.

Exclusive Remedies

The remedies provided herein are the buyer's sole and exclusive remedies. Solmetex shall not be liable for any direct, indirect, special, incidental or consequential damages, whether based on contract, tort or any other legal theory.

Service

The Hg5[®] Mini is designed to provide years of trouble-free service, with minimal attention. In the unlikely event of system related problems, please review the Q&A or troubleshooting section.

Q&A: Little or no vacuum at the hand piece.

1. Check sediment level of collection container, if full change the collection container.
2. If the vacuum gauge reads normal but there is little or no vacuum to the hand piece, there is probably a clog or a leak between the hand piece and the Hg5[®] Mini.
3. If the vacuum gauge reads lower than normal these are the possible causes:

Did you just replace the collection container?

Yes: Check installation of the new collection container. If the vacuum is low there is a possibility that the o-rings on the collection container did not seal into the receivers. With the vacuum running, remove the collection container, check the o-rings and re-install per the collection container installation procedure.

No: If you have a solids collection cup (installed by others) - check & clean or replace element/screen if necessary.

Service continued

Check operation of the vacuum pump.

- Listen for vacuum leaks.
- Check all connections for breaks or cracks.
- Check all flexible hose for kinks, breaks, or loose clamps.

Q&A: Water in the upper chamber (Air Water Separator)

1. Check sediment level of collection container, if full change collection container.
2. Check the pH of vacuum line cleaner, if below 6 or above 10 change collection container and line cleaner. Visit www.solmetex.com for a recommended list of cleaners.
3. Call or email your dental dealer for support if the problem cannot be solved easily.

Troubleshooting

NOTICE

- Refer to Hg5 Collection Container Replacement & Recycle Procedure manual at www.solmetex.com for removal of container.
- Always wear protective gear when handling full Hg5® collection containers.
- Keep the vacuum system running during the entire collection container replacement procedure.
- This procedure should be performed only when no operatories are being used as loss of chairside vacuum may occur.

Solids reach full line of collection container.

Change the collection container.

Solids are above full line of collection container.

Change the collection container.

Inspect the top chamber for solids.

Top chamber has some solids.

System is backed up.

- Turn on vacuum
- Remove pins
- Tilt container towards manifold to allow air into top chamber
- Place container back on and insert pins

Top chamber is full with solids.

System is in bypass.

- Reduction in suction
- Solids released into waste stream and environment
- Top chamber needs to be replaced
- Full top chamber needs to be recycled

The equipment/utility room has poor lighting.

Bring a flashlight to check the container. Using a flashlight from the backside of the system and shining it forward will help determine the level of sedimentation. This can also be used to inspect the top chamber using the same procedure.



In 1999, Solmetex designed the Hg5 that has quickly become the industry standard in Amalgam Separation. We have extensive experience in water chemistry, chemical separation science, process engineering, high performance manufacturing as well as Federal, State and local regulations governing water and hazardous wastes. What makes Solmetex different is our 'Total Solution Provider' concept – integrating waste handling and recycling into our complete product line to provide a truly *green* set of solutions. Solmetex is the global leader and our Hg5 system is the gold standard in high performance amalgam separation.

Solmetex LLC
50 Bearfoot Road
Northborough, MA 01532

800.216.5505